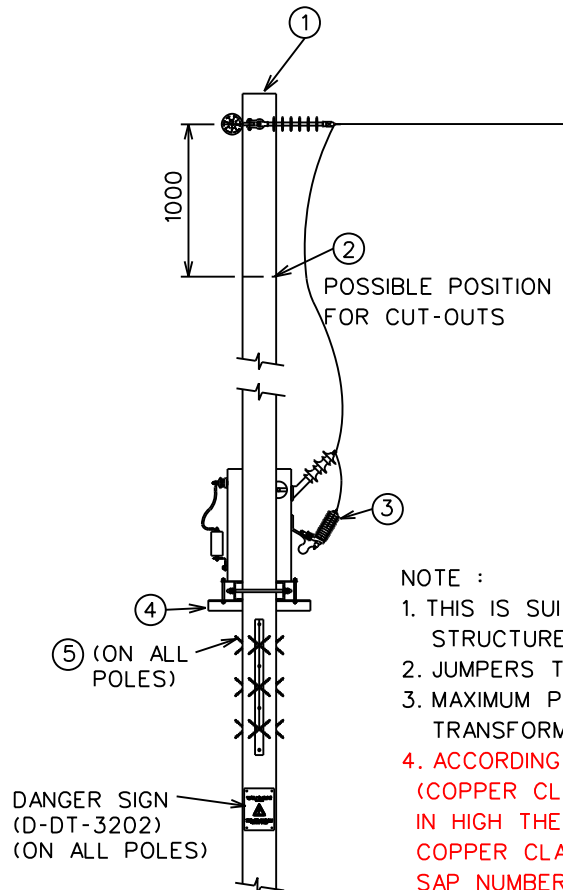


FRONT VIEW



RIGHT VIEW

DANGER SIGN
(D-DT-3202)
(ON ALL POLES)

⑤ (ON ALL
POLES)

②

POSSIBLE POSITION
FOR CUT-OUTS

①

1000

NOTE :

1. THIS IS SUITABLE FOR ANY H-POLE STRUCTURE.
2. JUMPERS TO BE COVERED CONDUCTOR.
3. MAXIMUM PERMISSABLE LOAD ON TRANSFORMER PLATFORM = 1700kg.
4. ACCORDING TO REPORT 240-100 991892 (COPPER CLAD STEEL CONDUCTOR FOR EARTHING) IN HIGH THEFT AREAS, COPPER TO BE REPLACED WITH COPPER CLAD STEEL:
SAP NUMBER 0175491 FROM D-DT-3137.

| REFERENCE DRAWINGS | | |
|-----------------------|---|------------------------|
| ITEM | DESCRIPTION | DWG NO |
| STRUCTURES | | |
| 1 | H - POLES | D-DT-1763 TO D-DT-1769 |
| EQUIPMENT ATTACHMENTS | | |
| 2 | -EQUIPMENT LINKS | D-DT-1851 D-DT-1874 |
| 3 | -SURGE ARRESTERS | D-DT-0261 |
| 4 | -EQUIPMENT MOUNTING PLATFORM | D-DT-0271 |
| 5 | -ANTI-CLIMBING DEVICE | D-DT-0399 |
| EQUIPMENT EARTHING | | |
| | -TRANSFORMER PLATFORM MOUNTED - EARTHING DETAIL | D-DT-1861 (Sheet 2) |

| 3 | NOTE 4 ADDED RE COPPER CLAD | P.A.T. | B. HILL | B. HILL | 22.07.2016 | |
|-----|--|--------|----------|----------|------------|-------------|
| 2 | VARIOUS CHANGED DONE, ANTI-CLIMBING AND DANGER SIGNS ADDED | P.A.V. | R.THERON | R.THERON | 06.06.2003 | |
| 1 | SA CONNECTIONS MODIFIED | P.A.V. | R.THERON | P.CROWDY | 06.12.2000 | |
| REV | REVISION DESCRIPTION | BY | CHKD | AUTH | DATE | PROJECT NO. |



AUTH: B.BRANFIELD

DATE: 13/01/1999

CHKD: B.BRANFIELD

DATE: 13/01/1999

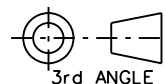
DRAWN: P.VERMAAK

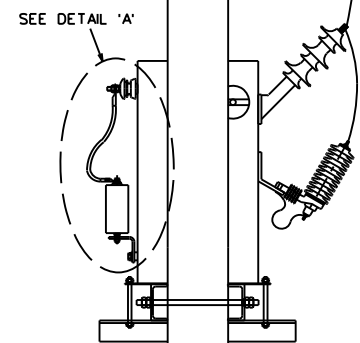
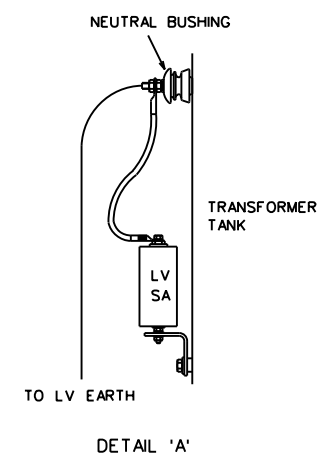
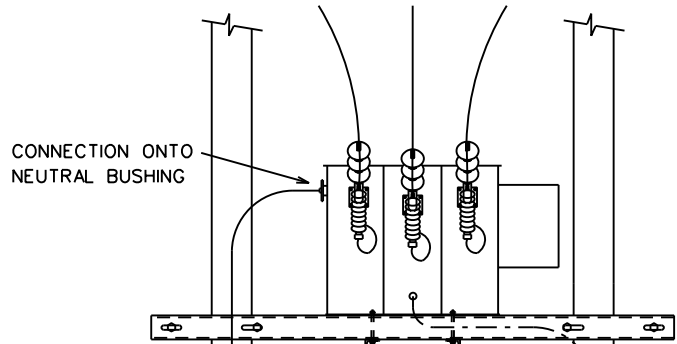
DATE: 23/06/1998

MV TRANSFORMER 100 - 200kVA
2-POLE PLATFORM MOUNTED (H-POLE)
GENERAL ARRANGEMENT

D-DT-1861

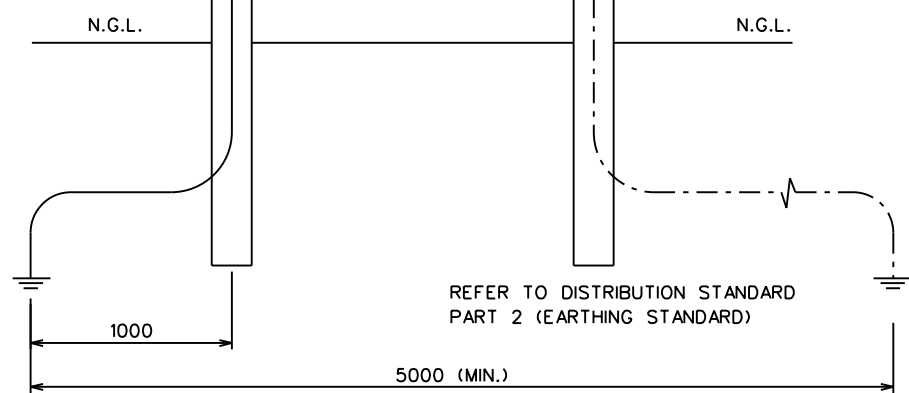
| SET | SHEET | REVISION |
|-----|-------|----------|
| 2 | 1 | 3 |





LEGEND:
 - - - - - MV EARTH
 _____ LV EARTH

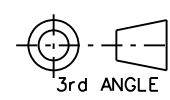
NOTE:
 ACCORDING TO REPORT 240-100 991892
 (COPPER CLAD STEEL CONDUCTOR FOR EARTHING)
 IN HIGH THEFT AREAS, COPPER TO BE REPLACED WITH
 COPPER CLAD STEEL:
 SAP NUMBER 0175491 FROM D-DT-3137.




FRONT VIEW

RIGHT VIEW

REFER TO DISTRIBUTION STANDARD
 PART 2 (EARTHING STANDARD)



| 3 | NOTE 4 ADDED RE COPPER CLAD | P.A.T. | B. HILL | B. HILL | 22.07.2016 | |
|-----|--|--------|----------|----------|------------|-------------|
| 2 | VARIOUS CHANGED DONE, ANTI-Climbing AND DANGER SIGNS ADDED | P.A.V. | R.THERON | R.THERON | 06.06.2003 | |
| 1 | SA CONNECTIONS MODIFIED | P.A.V. | R.THERON | P.CROWDY | 06.12.2000 | |
| REV | REVISION DESCRIPTION | BY | CHKD | AUTH | DATE | PROJECT NO. |

| | | | | | |
|---|--|---|-----|-------|----------|
|  Eskom | | MV TRANSFORMER 100 - 200kVA 2-POLE PLATFORM MOUNTED (H-POLE) EARTHING DETAILS | | | |
| AUTH: B.BRANFIELD | | | | | |
| DATE: 13/01/1999 | | | | | |
| CHKD: B.BRANFIELD | | | | | |
| DATE: 13/01/1999 | | D-DT-1861 | SET | SHEET | REVISION |
| DRAWN: P.VERMAAK | | | 2 | 2 | 3 |
| DATE: 23/06/1998 | | | | | |